

Encore FR Pro Color



Light Efficiency:

13 Lumen/Watt

Light Quality:

CRI: 98.1

Color Temperature:

4995 K

Output: 4928 lm

Peak: 114686 cd

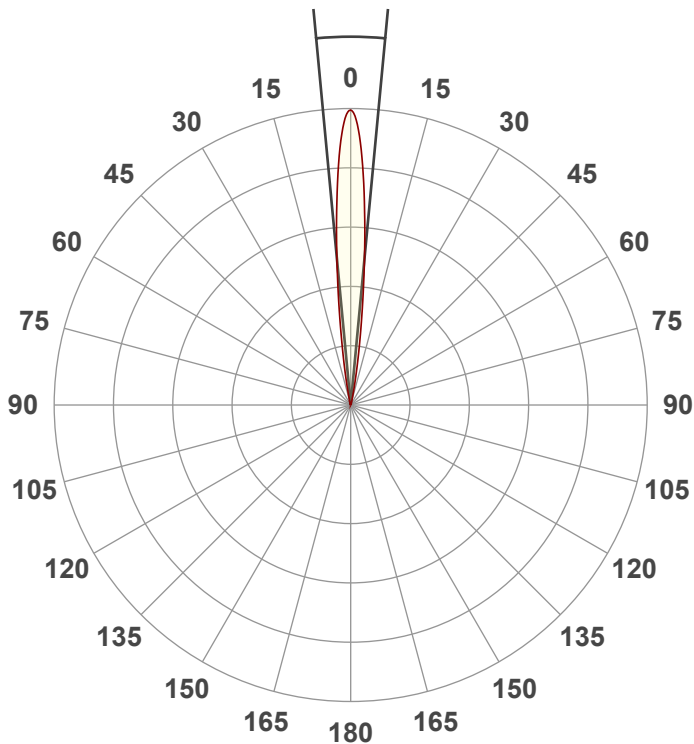
Power: 387 W

PF: 1.0



Beam Angle

10.8°



Test:

Zoom 50% CRI

Date:

11/15/2021

Note:

R @ 232

G @ 255

B @ 148

A @ 255

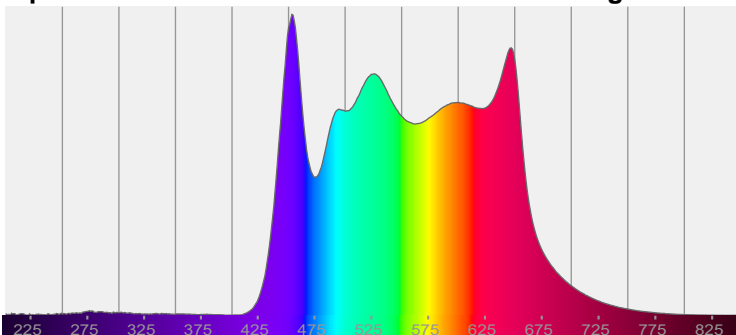
C @ 255

L @ 255

CIE 1931
x: 0.347
y: 0.364

Spectra

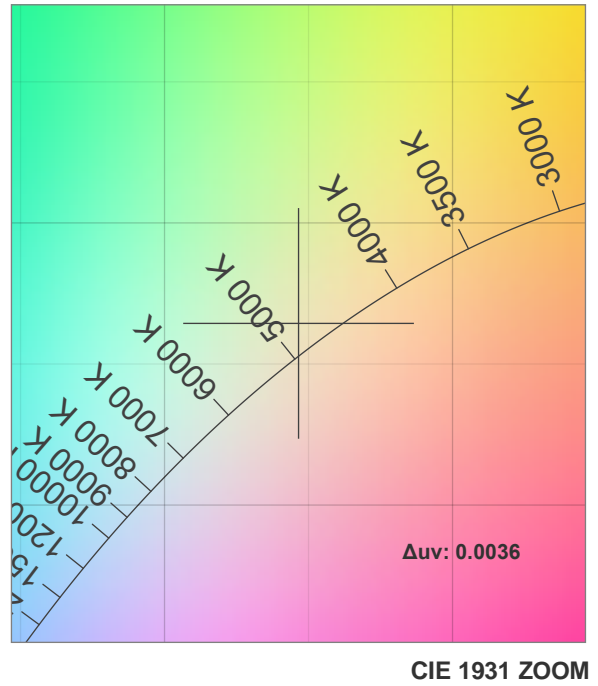
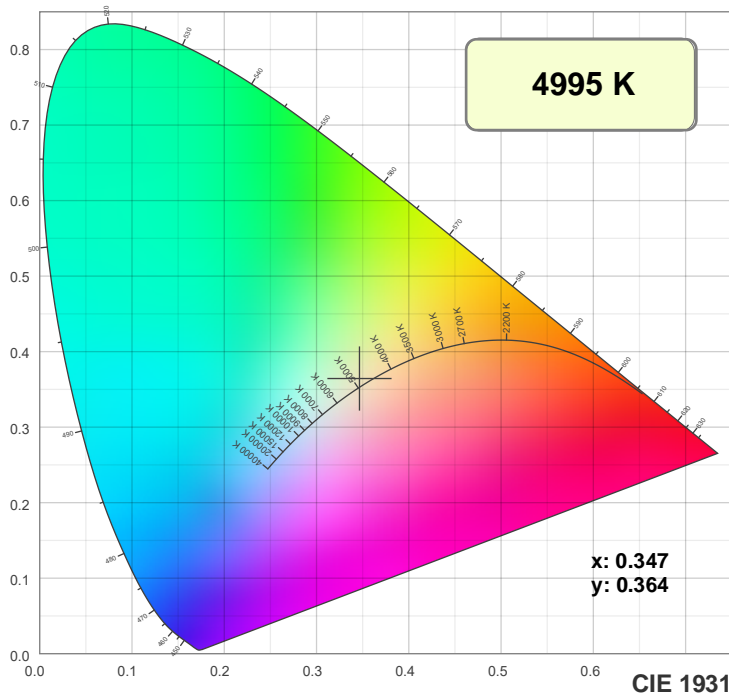
Dominant Wavelength: 576nm



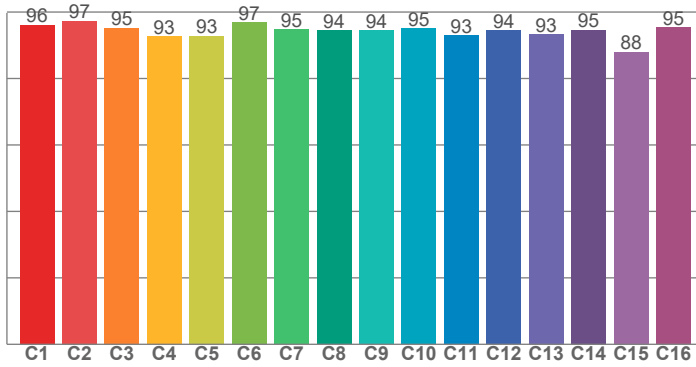
Power

Voltage: 115 V
Current: 3.36 A
Frequency: 0 Hz

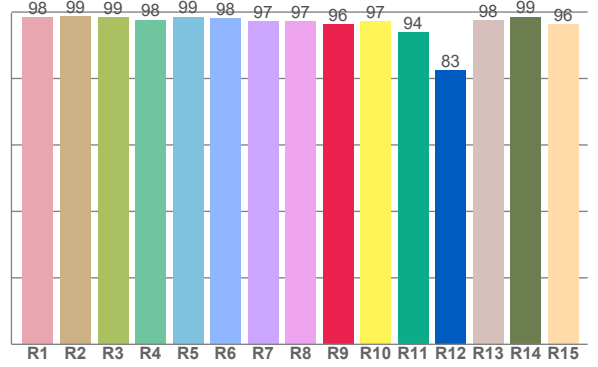
Color Details



TM30: 94.3



CRI: 98.1 (R1-R8)



CRI R values, only R1-R8 are used to calculate final CRI value

R1	R2	R3	R4	R5	R6	R7	R8	R9	R10	R11	R12	R13	R14	R15
98.4	98.8	98.5	97.7	98.6	98.0	97.3	97.2	96.3	97.2	94.0	82.6	97.6	98.6	96.4

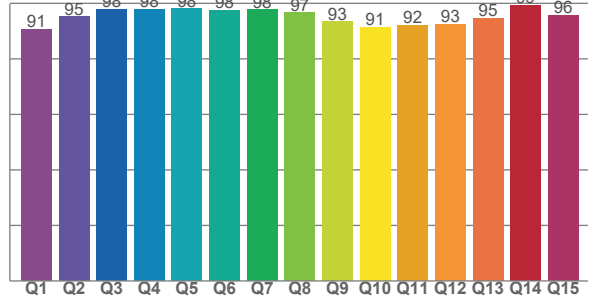
TM30 C values, 16 binned values out of total of 99 C values

C1	C2	C3	C4	C5	C6	C7	C8	C9	C10	C11	C12	C13	C14	C15	C16
96.1	97.4	95.2	92.7	92.8	96.9	94.8	94.5	94.4	95.0	93.0	94.4	93.3	94.6	88.0	95.4

CQS Q values

Q1	Q2	Q3	Q4	Q5	Q6	Q7	Q8	Q9	Q10	Q11	Q12	Q13	Q14	Q15
90.7	95.2	97.9	97.8	98.1	97.5	97.8	96.7	93.3	91.5	92.1	92.6	94.7	99.4	95.8

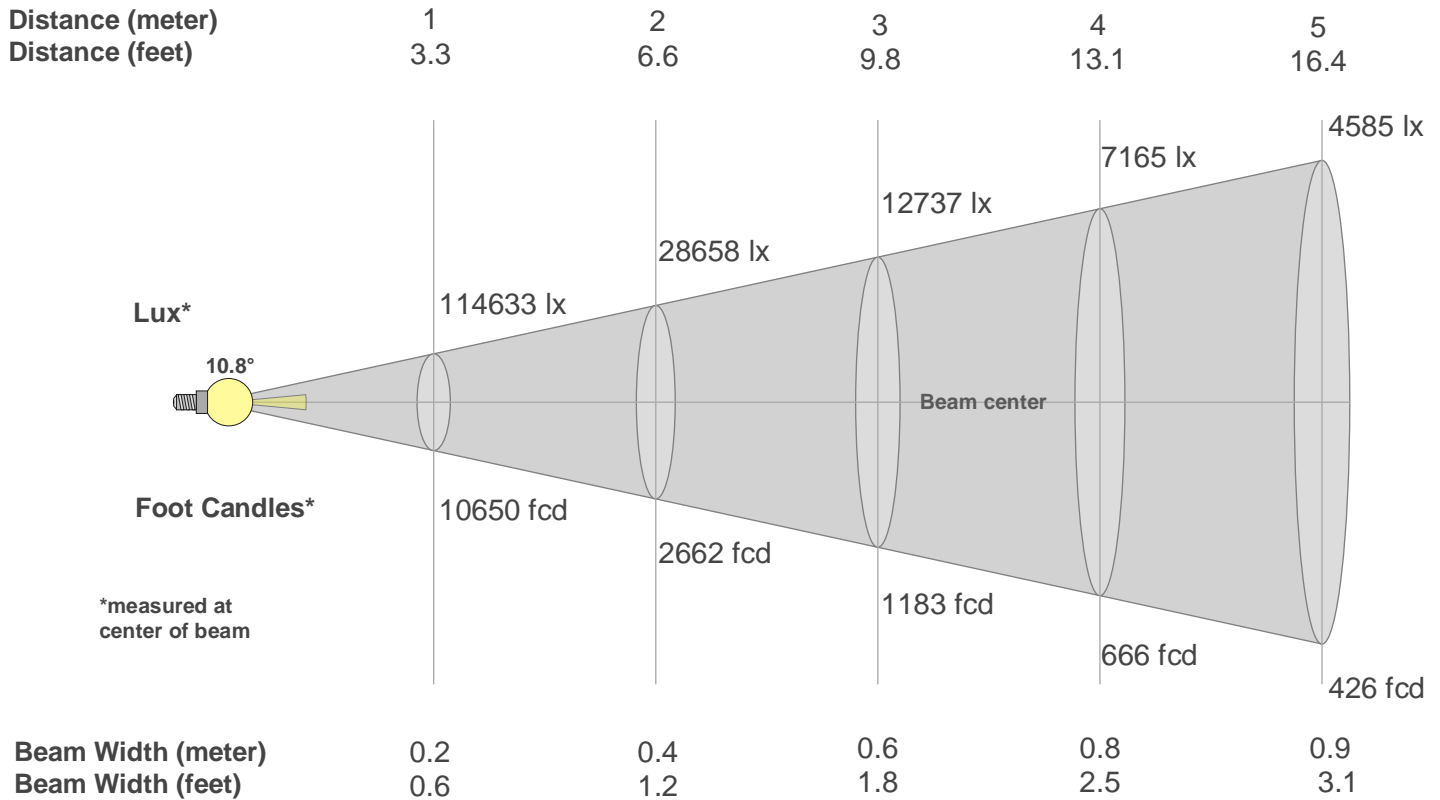
CQS: 94.7



Color Parameters

Color Temperature	Color Rendering Index	Red Component	Color Fidelity	Color Gamut	Color Quality Scale	Color Coordinate CIE 1931	Color Coordinate CIE 1931	Color Coordinate	Color Coordinate	Color Deviation from Black Body
CCT	CRI	CRI R9	TM30 Rf	TM30 Rg	CQS	x	y	u	v	Δuv
4995 K	98.1	96.3	94.3	100.0	94.7	0.347	0.364	0.208	0.327	0.0036

Beam Details



Beam Intensities from 1-20m

m	1	2	3	4	5	6	7	8	9	10	11	12	13	14	15	16	17	18	19	20
ft	3.3	6.6	9.8	13.1	16.4	19.7	23	26.2	29.5	32.8	36.1	39.4	42.7	45.9	49.2	52.5	55.8	59.1	62.3	65.6
lx	114633	28658	12737	7165	4585	3184	2339	1791	1415	1146	947	796	678	585	509	448	397	354	318	287
fcd	10649.8	2662.4	1183.3	665.6	426	295.8	217.3	166.4	131.5	106.5	88	74	63	54.3	47.3	41.6	36.9	32.9	29.5	26.6

Intensities in 0° C-plane

0°	1°	2°	3°	4°	5°	6°	7°	8°	9°	10°	11°	12°	13°	14°	15°	16°	17°	18°	19°
115K	112K	104K	92K	78K	63K	48K	36K	25K	17K	11K	7K	4K	3K	2K	1K	1K	1K	1K	0K
100%	98%	91%	80%	68%	55%	42%	31%	22%	15%	10%	6%	4%	2%	2%	1%	1%	1%	0%	0%

Intensities in 90° C-plane

0°	1°	2°	3°	4°	5°	6°	7°	8°	9°	10°	11°	12°	13°	14°	15°	16°	17°	18°	19°
115K	112K	104K	92K	78K	63K	48K	36K	25K	17K	11K	7K	4K	3K	2K	1K	1K	1K	1K	0K
100%	98%	91%	80%	68%	55%	42%	31%	22%	15%	10%	6%	4%	2%	2%	1%	1%	1%	0%	0%

Intensities in 180° C-plane

0°	1°	2°	3°	4°	5°	6°	7°	8°	9°	10°	11°	12°	13°	14°	15°	16°	17°	18°	19°
115K	112K	103K	91K	77K	63K	49K	36K	26K	18K	12K	8K	5K	3K	2K	2K	1K	1K	1K	1K
100%	97%	90%	80%	67%	55%	42%	32%	23%	16%	10%	7%	4%	3%	2%	1%	1%	1%	1%	1%

Intensities in 270° C-plane

0°	1°	2°	3°	4°	5°	6°	7°	8°	9°	10°	11°	12°	13°	14°	15°	16°	17°	18°	19°
115K	112K	103K	91K	77K	63K	49K	36K	26K	18K	12K	8K	5K	3K	2K	2K	1K	1K	1K	1K
100%	97%	90%	80%	67%	55%	42%	32%	23%	16%	10%	7%	4%	3%	2%	1%	1%	1%	1%	1%

Beam Angle 50%	Field Angle 10%	Cutoff Angle 2,5%	Intensity Ratio in 120° Cone	Intensity Ratio in 90° Cone
10.8°	20°	26.1°	100.0%	100.0%